

Idaho Career Ready Students Proposal

Summary Page

General Information		
Project Name		
School Name		
LEA Name		
Project Type		
<input type="checkbox"/> Capital Construction Costs	<input type="checkbox"/> New Program Support	<input type="checkbox"/> Existing Program Support & Upgrades
Legislative Priorities		
<input type="checkbox"/> Capital Investments for In-Demand Careers	<input type="checkbox"/> Supporting Rural Schools	
<input type="checkbox"/> Addressing Regional & Community Needs	<input type="checkbox"/> Addressing Challenges Accessing Resources	
Summary		
Meeting Date		
Committee:		
Council:		
Final Award		
<input type="checkbox"/> Fund as Submitted	<input type="checkbox"/> Do Not Fund	<input type="checkbox"/> Fund w/Modifications _____

APPLICATION DEADLINE

The program application period is not subject to deadlines and requests may be submitted throughout the school year.

CREATED 07/01/2023 SY2023-2024 Grant Application / Idaho Career Ready Students / SDE / 1

GRANT APPLICATION

School Name	Opportunity open to all Lake Pend Oreille, Boundary County, and West Bonner County School District students, to include all five high schools: SHS, CFHS, LPOHS, BFHS, PRLHS.
District Name	Lake Pend Oreille School District
School Address	365 N. Triangle Dr, Ponderay, ID 83852
Point of Contact & Direct Phone Number	Dr. Becky Meyer, LPOSD Superintendent 208.290.1948
Point of Contact Email	becky.meyer@lposd.org

PROJECT INFORMATION

Please describe how your community, region, or the state will benefit from an ICRS grant:	
<p>The rural students in North Idaho (Bonner and Boundary Counties) need access to a career technical center with diverse and robust Career Technical Education (CTE) programs to expand opportunities for students and increase the qualified workforce in our communities. Many students in North Idaho struggle to see viable options beyond high school and do not consider college an affordable or realistic option. The Lake Pend Oreille School District (LPOSD) has developed a solution - create a program patterned after the highly successful KTEC model, the award winning CTE campus in Rathdrum. Our program will be called Career Technical Education Center (CTEC) of North Idaho.</p> <p>Having been on the KTEC Board for six years, I feel confident in developing and leading an effective and engaging CTE center. KTEC enrolls over 600 students from the three districts in Kootenai County, with a waiting list typically over 100 students. The high student demand, paired with the reality that our North Idaho students are not able to attend KTEC, demonstrates the pressing need for CTE opportunities for our rural students. In the last three years I was on the KTEC Board, we boasted a 100% placement rate after graduation and the</p>	

highest attendance rates of any surrounding school. Students NEED this opportunity in North Idaho in order to meet the needs of all students, best prepare them for the future and support our local and regional in-demand industry needs, as identified by the State of Idaho.

Increasing options and access to robust CTE programs for all students was identified as a TOP priority in our community. Last school year, we undertook gathering massive stakeholder input to develop long term visioning through a Strategic Plan. We utilized surveys, community input forums, focus groups, and several synthesizing processes to develop the top priorities in the district. Our community not only desires increased CTE opportunities for students to expand post-secondary viable workforce options, but also as an opportunity to meet the changing and diverse economic conditions in our community. The lack of workforce-ready graduates weighs heavily on our community businesses and creating a successful CTEC program will empower both students and staff to give back to the community. With the vision of what CTEC could offer to our community's students, staff, employers, and organizations, we have received over 30 commitments of solid support to partner in the project (see list below), ranging from financial, in-kind services, labor & equipment, CTEC staff support, and additional fundraising needs to expand CTEC.

Increasing our graduation rate was also identified as a priority and is included in our rationale for the necessity of building CTEC. Students often cite "lack of relevancy" as their reason to drop out of high school. The graduation rate from the three KTEC districts exceeds our North Idaho districts' rates, largely due to the relevant curriculum and learning opportunities our hands-on students are looking for in order to stay engaged and successful in high school. CTEC will provide this opportunity and contain the industry-relevant math/science/English courses that have been found to be so effective for students at CTE campuses throughout the state. Increased relevancy is not the only factor that will increase our graduation rate in North Idaho. Once students learn graduation from CTEC virtually guarantees lucrative employment in our area, the demand for CTEC will only rise. As proven at KTEC and other CTE campuses throughout the state, a successful CTEC program will foster higher attendance and graduation rates for participating districts.

CTEC will be open to all students in the three surrounding districts: West Bonner County School District, Boundary County School District and the LPOSD. This will benefit three districts, over 6,400 rural students, Bonner and Boundary County communities, and countless local industries. Since KTEC is not available to any of our three districts, CTEC will provide a desperately needed program to meet the growing needs of our students. CTEC will perfectly align with the intention of the ICRS grant and offer hope and stability for many North Idaho families and their students.

Career Technical Education Center (CTEC) "C-Tech"

CTEC, a cooperative career technical center for students in all three districts to access, will be located at an easily accessible facility in Ponderay on property owned by the LPOSD near several industry partners. LPOSD will donate land and space in a current facility, allowing implementation of several NEW CTE programs and significant expansion of current CTE programs, as well. This will also allow for expansion of current CTE programs at Sandpoint High School (SHS) since there is no ability to expand on the existing building and CTE spaces are severely constrained for space. After the initial phase of CTEC (attached plans), following

phases will include moving all CTE programs to CTEC. The ICRS grant will fund Phase 1 of CTEC, which will significantly expand CTE opportunities for rural students and offer a true Career Technical Education campus for all North Idaho students. Phase 2 and Phase 3 will be funded with local funding sources (annual facility funds awarded from indefinite term levy in LPOSD) and business fundraising plans already in place.

Phase 1 (Year 1-2)

- New = [Forestry & Natural Resources management and sawmill at CTEC](#)
- New = Automotive & Diesel Mechanics at CTEC
- New = Hospitality/Resort Services at CTEC
- Expansion = Residential Carpentry at CTEC
- Expansion = Health Occupations at CTEC

Phase 2 (Year 3-4)

- Expand and move Welding program from SHS & CFHS to CTEC
- Expand and move Culinary Arts program from SHS & LPOHS to CTEC
- Expand and move Autocad-Drafting program from SHS & LPOHS to CTEC
- Expand and move Computer Science program from SHS & LPOHS to CTEC

Phase 3 (Year 5-6)

- Explore NEW programs for CTEC, to include HVAC, Electrical, Plumbing, Autobody, Millwright, Dental Assistant, etc.
- Move LPOHS alternative school program and students into one section of the current District Office, while relocating District Office staff to LPOHS
- Transition District Office space completely to CTEC, while relocating District Office staff to LPOHS building, becoming the new DO

Please identify any partnerships with local industry or other stakeholders including, but not limited to, financial support or donations, equipment, instructor(s), technical help, etc.

LPOSD is one of six districts in the state with an indefinite term levy (permanent levy). This is a huge benefit for the stability and sustainability of CTEC. Although we will eventually need to go back out to voters to solicit raising the supplemental levy due to cost of living and inflationary increases, the base amount, \$12.7 million annually, will remain stable. This allows for CTEC's expenses and staffing to have solid backing, not dependent on local voter elections.

LPOSD will donate the following to CTEC:

- 3.8 acres of land in Ponderay
- One wing of the current District Office in Phase 1, which is 1800 sq. ft. This is one section of the 19,385 total sq. ft., which is valued over \$6 million total.
- The entire District Office for the following Phases, which is 19,385 sq. ft. and valued at over \$6 million
- Donated labor for logging land
- Donated labor & equipment for initial groundwork
- All CTE instructors for CTEC
- CTEC Administrator
- All initial and ongoing Technology needs with our LPOSD Tech team
- All ongoing facility and maintenance needs with our LPOSD Facilities crew
- Ongoing oversight by the LPOSD Superintendent, an experienced CTE center program Board member
- Ongoing oversight by the LPOSD Board of Trustees
- Local Foundation fundraising commitment for Phases 2-6
- Local industry partners fundraising and labor/equipment donation commitment for Phases 2-6

Industry shortages in CTE trained professions are rampant in North Idaho. Current labor shortages have been experienced in our region in all CTE programs listed in the previous section. Local industry, private foundations, cooperating businesses, and university partners listed below have given support assurances:


- University of Idaho College of Natural Resources
- Idaho Forest Group, the Associated Logging Contractors and University of Idaho Experimental Forest groups
- Idaho Forest Commission
- Potlatch Deltic
- Idaho Department of Lands
- USFS
- Shawn Keough, Idaho State Board of Education and Associated Logging Contractors Executive Director
- Blake Manley, formerly with Oregon Future Natural Resource Leaders (OFNRL), now with the University of Idaho Experimental Forest as Program Manager of Workforce Development
- Kaniksu Land Trust
- The local Forestry Industry partners
- A-T Cattle Ranch, Inc.
- Schweitzer Mountain Resort
- City of Ponderay
- Bonner General Health and a variety of local doctor offices
- Western States Cat
- Compass Mechanical in Ponderay and several other local automotive repair shops
- Northwest Auto Body in Ponderay

- Interstate Concrete & Asphalt - Equipment & Mechanics
- Mountain View Construction, Idagon Construction, Selle Valley Construction, Pioneer Custom Homes, and local construction companies
- RCP Board, Inc. (Residential Carpentry Program Board)
- Daher Aerospace (Kodiak)
- Spacepoint
- Sandpoint Airport and student aviation program
- PAFE - Panhandle Alliance for Education - Local Foundation
- Litehouse - Kelly Prior, CEO
- Workforce Training Center - Colby Mattila, Executive Director
- Ron Nilson, Former KTEC Board member and Ground Force Manufacturing President
- Idaho Business for Educators - Rod Gramer, President

CREATED 07/01/2023 SY23/24 Grant Application / Idaho Career Ready Students / SDE / 2

If yes, please describe the existing program, pathway, or cluster:	
X	This request supports an existing program, pathway, or cluster within the district.
X	This request supports a program, pathway, or cluster that is new to the district.

Please list the items needed to support the ICRS grant request:		
	Total Amount	Summarize resources and how they will be used to support the ICRS grant.
Curriculum	\$ 0	
Travel	\$ 0	
Consumables (materials & supplies)	\$ 0	
Equipment	\$ 658,000	\$38,000 = Forestry program start up in conjunction with industry donations and partnerships \$620,000 = Automotive program start up in

		conjunction with industry donations and partnerships, further fundraising and grants will be pursued.
Capital Costs for Building Programming & Construction	\$4,060,922 (\$4,145,312 total cost minus \$84,390 permitting fees and testing/inspection costs to be picked up by the district)	Cost estimate for 11,600 sf CTEC Building to support CTE programs, with room for expansion in existing LPOSD space. Instructional spaces include classrooms, labs, shops, and covered outdoor space for the Forestry program. Draft floor plans attached. District will cover \$84,390 permitting fees and testing/inspection costs on attached cost estimate sheet. We acquired a construction consulting team to revise our first proposal to ensure accurate and as cost effective estimates as possible. The new cost estimate sheet is linked below and attached to the application.  11-29-23 CTEC estimate of probable cost.pdf Draft CTEC Floor Plans Draft CTEC Lot Plans
IDCTE Approved Program w/o Added Cost Funds	\$ 58,330	For Forestry program equipment outlined in application
Other Expenses	\$	
Grand Total	\$ 4,777,252	

CREATED 07/01/2023 SY23/24 Grant Application / Idaho Career Ready Students / SDE / 3

GRANT SUBMISSION

Submit the completed application to Idaho Career Ready Students at ICRS@sde.idaho.gov.

Grant awards will be made through the Idaho Career Ready Students Program Council (Council).

The Council will meet on a quarterly basis to review grant applications, or as needed.

For Questions Contact

Idaho Career Ready Students
Idaho State Department of Education

Idaho Career Ready Students

SY 2023/2024 Grant Application – Supplemental Questions

GRANT APPLICATION

General Information	
Project Name	CTEC (Career Technical Education Center)
School Name	Opportunity open to all Lake Pend Oreille, Boundary County, and West Bonner County School District students, to include all five high schools: SHS, CFHS, LPOHS, BFHS, PRLHS.
LEA Name	Lake Pend Oreille School District
School Address	365 N. Triangle Dr, Ponderay, ID 83852
Point of Contact & Direct Phone Number	Dr. Becky Meyer, LPOSD Superintendent 208.290.1948
Point of Contact Email	becky.meyer@lposd.org
Superintendent Name	Dr. Becky Meyer, LPOSD
Superintendent Email	becky.meyer@lposd.org

PROJECT INFORMATION

Has the LEA pursued, applied for, or requested other funding sources for this program	
	No
X	Yes – list the funding source(s) and status of the request below.
	Funding Source: <ol style="list-style-type: none">1. Panhandle Alliance for Education (PAFE)2. City of Ponderay - land acquisition amount below market value

	<ul style="list-style-type: none"> 3. RCP Board 4. Forestry - Idaho Forest Group 5. Kaniksu Land Trust 6. Bonner General Health 7. Daher Aerospace 8. Spacepoint 9. Lake Pend Oreille School District (LPOSD)
<p>Status of the Request: <i>(check all that apply)</i></p>	
x	<ul style="list-style-type: none"> <input type="checkbox"/> \$375,000 = Donated undeveloped land from the LPOSD, current land value <input type="checkbox"/> \$6 million = value of the existing LPOSD District Office building/warehouse in Ponderay <input type="checkbox"/> \$203,700 = Awarded from PAFE, with promise of continuing funds <input type="checkbox"/> \$7,480 = Awarded from RCP Board, with promise of continuing funds for Residential Carpentry program <input type="checkbox"/> Donated forestry access and partner sawmill equipment from Kaniksu Land Trust <input type="checkbox"/> Existing transportation routes from the LPOSD <input type="checkbox"/> Donated warehouse and facility use from Daher Aerospace <input type="checkbox"/> Donated facility and observatory access from Spacepoint <input type="checkbox"/> Several offers of donations from local industry partners in construction, automotive, resort/hospitality, medical, etc. <input type="checkbox"/> Several offers from local industry partners for in-kind services, labor & equipment, CTEC staff support and additional fundraising needs.
	Not Awarded
x	<p>In Process or Waiting to Hear</p> <ul style="list-style-type: none"> <input type="checkbox"/> City of Ponderay <input type="checkbox"/> Bonner General Health

Sustainability

Please describe your plan to sustain the program and keep it viable:

Provide as much detail as possible, attaching additional sheet(s) if needed.

My experience serving on the KTEC Board for six years has given me a unique perspective in how to effectively maintain and grow a sustainable industry-ready CTE program. CTEC will remain viable because of attractive CTE programs, waiting lists and industry-ready graduates. KTEC enrollment skyrocketed during my tenure on the Board, there were waiting lists for almost all programs, and enrollment was determined based on high industry standard expectations. CTEC will be held to the same standards and maintain competitive enrollment practices. This ensures a viable and sustainable program for years to come. Similar to KTEC, we expect students to earn near 100% post-graduate placement rates to industry.

Community support, both now and in the future, will sustain the effectiveness of CTEC. As with other CTE programs throughout the state, they are in high demand and consistently hold a waiting list of students and programs. During the six years I was on the KTEC Board, we had industry partners on the waiting list to join CTE programs every year. This anticipation blossomed into many donations of equipment, trainers, and funding. This successful industry-CTEC partnership will enable CTEC to not only thrive, but grow in its benefit for students and the community!

CTEC funding will be sustainable through the following avenues:

- Indefinite term levy funds (permanent levy) in the LPOSD at \$12.7million/year
- Facility funds provided to LPOSD through HB 292, currently \$1.397million/year
- Proven high student attendance (ADA)(KTEC was always near 100%)
- CTE funding from the IDE CTE program
- Community partnerships outlined in the ICRS application
- District support through financial and staffing
- Similar to how KTEC functions, the three districts will assist with normal operations necessary to run a program (maintenance, transportation, tech support).
- Industry-equivalent equipment will be obtained from our industry partners, through reallocated equipment, donations, industry investments, and on the job internships, as is the common practice in KTEC
- Assured community/industry volunteers
- Additional programmatic needs will be addressed annually through stated program metrics and outcomes

Program Metrics and Outcomes

Please describe the program outcomes you wish to achieve if awarded an ICRS grant:

Provide as much detail as possible, attaching additional sheet(s) if needed.

- Increased CTE program opportunities for all students
- Increased CTE student enrollment

- Increased CTE graduates and CTE diplomas
- Increased CTE industry placement post-graduation
- Increased quality preparation for our CTE students
- Increased industry labor force available for local industry shortages
- Increased partnership between school districts and industry in the two most northern counties
- A sustainable and viable CTEC program to continue in perpetuity in service to rural North Idaho students

Please provide the metrics you will use to determine the program’s success:

Year 1:	<ul style="list-style-type: none"> ● CTE programs available to students ● CTE student enrollment ● CTEC waiting list numbers ● CTE student graduation rate ● CTE diplomas awarded ● CTE industry placement rate post-graduation ● Number of industry certifications for CTEC students ● Go on rate to post-secondary CTE courses as reported in Launch ● Industry partners end of year satisfaction and feedback survey ● CTE student survey ● Financial sustainability measure
Year 2:	<ul style="list-style-type: none"> ● CTE programs available to students ● CTE student enrollment ● CTEC waiting list numbers ● CTE student graduation rate ● CTE diplomas awarded ● CTE industry placement rate post-graduation ● Number of industry certifications for CTEC students ● Go on rate to post-secondary CTE courses as reported in Launch ● Industry partners end of year satisfaction and feedback survey ● CTE student survey ● Financial sustainability measure ● Full stakeholder survey to explore expansion or additional CTE program offerings

ADMINISTRATOR SUPPORT

I, Becky Meyer, **Superintendent**, LPOSD, fully support the Idaho Career Ready Students Program proposal for the CTEC project. I shall ensure all funding received from an Idaho Career Ready Students Program grant shall be used as indicated in the proposal submitted as part of the grant application. Any unused funds shall be returned to the State Department of Education upon completion of the project, or by June 1 of the current fiscal year.

GRANT SUBMISSION

Submit the completed questionnaire to Idaho Career Ready Students at ICRS@sde.idaho.gov.

Grant awards will be made through the Idaho Career Ready Students Program Council (Council). The Council will meet on a quarterly basis to review grant applications, according to the timeline listed below.

2023/2024 Timeline	
Submission Date:	Award Date:
Proposals received before August 15, 2023	September 15, 2023
Proposals received before November 1, 2023	December 1, 2023
Proposals received before February 1, 2024	March 1, 2024
Proposals received before May 1, 2024	June 1, 2024

For Questions Contact

Idaho Career Ready Students
Idaho State Department of Education
650 W State Street, Boise, ID 83702
208 332 6978 | aduman@sde.idaho.gov



Project: CTEC For Bonner & Boundry County

Estimator: BW

Square Feet: 11,600

Date: 12/27/2023

SQFT Cost Conceptual Estimate

Construction Cost				
	Sitework & Utilities	\$385,000.00	\$33.19	
	Fences & Gates	\$12,500.00	\$1.08	
	Landscape & Irrigation	\$57,500.00	\$4.96	
	Site Concrete	\$56,000.00	\$4.83	
	Parking Lot	\$69,275.00	\$5.97	
	Building Concrete	\$196,000.00	\$16.90	
	Masonry	\$39,253.00	\$3.38	
	Misc. Steel	\$37,500.00	\$3.23	
	Framing & Siding Material	\$562,500.00	\$48.49	
	Framing & Siding Labor	\$274,000.00	\$23.62	
	Insulation	\$53,000.00	\$4.57	
	Roofing	\$89,500.00	\$7.72	
	Cabinetry & Trim	\$72,000.00	\$6.21	
	Doors, Frames, & Hardware	\$75,000.00	\$6.47	
	Overhead Doors	\$72,500.00	\$6.25	
	Windows & Glazing	\$45,000.00	\$3.88	
	Drywall	\$83,250.00	\$7.18	
	Floor Covering	\$92,000.00	\$7.93	
	Painting	\$127,600.00	\$11.00	
	Specialties & Lockers	\$50,000.00	\$4.31	
	Fire Protection	\$75,000.00	\$6.47	
	Plumbing	\$87,000.00	\$7.50	
	HVAC	\$213,000.00	\$18.36	
	Electrical	\$225,000.00	\$19.40	
	Construction Subtotal	\$3,049,378.00	\$262.88	per sqft
	General Conditions/Reimbursables	\$319,000.00	\$27.50	
	Weather Protection Allowance	\$35,000.00	\$3.02	
	Construction Overhead & Profit	\$152,469.00	\$13.14	
	Contingency - 5%	\$152,469.00	\$13.14	
	Construction Total	\$3,708,316.00	\$319.68	per sqft

Construction Soft Costs				
	Building Permit & Plan Review Fees	\$67,512.00	\$5.82	
	Sewer & Water Hookup Fees	\$29,000.00	\$2.50	
	Telephone, Gas, & Cable	\$8,500.00	\$0.73	
	Builder's Risk Insurance	\$19,741.00	\$1.70	
	Material Testing & Inspection	\$16,878.00	\$1.46	
	Construction Soft Costs Subtotal	\$141,631.00	\$12.21	per sqft
Design Fees				
	A&E Fee Allowance	\$295,365.00	\$25.46	
	A&E Remibursables	\$0.00	\$0.00	
	Design Fee Total	\$295,365.00	\$25.46	per sqft
Additional Items				
	Shop Tools/Equipment and Furnishings	\$0.00	\$0.00	
	Technology	\$0.00	\$0.00	
	Owner Contingency	\$0.00	\$0.00	
	Additional Items Total	\$0.00	\$0.00	per sqft
Base Bid Project Cost		\$4,145,312.00	\$357.35	per sqft

Potential Donations				
1			\$0.00	
2			\$0.00	
3			\$0.00	
	Donations Total	\$0.00	\$0.00	per sqft
Total Project Cost minus Potential Donations		\$4,145,312.00	\$357.35	per sqft

Forestry & Natural Resources Management program at CTEC

Idaho had a \$2.5 billion dollar forest products industry in 2021, providing 30,500 jobs for Idahoans. according to the Idaho Forest Products Commission. Bonner County is 82% forested land, according to U of I. Due to this dependance on our abundant forestry resources, preparing our future workforce for the forestry industry will benefit local economies, local ecology, and give young people an opportunity to enter a vibrant industry without leaving the area.

This grant will provide the students in Lake Pend Oreille School District with hands-on training and enable us to support a high school forestry program to prepare students for a rewarding career in the forest products industry after high school. Similar programs throughout the country have been successful, and we are using those success stories as models.

Students entering higher education and those transitioning from high school directly into a career will benefit from hands-on training this grant will provide. Our students will leave high school better equipped for their own future and also better prepared to enter a field that supports our local economy. Forestry and the logging industry support many Idaho families, and northern Idaho is rich with forestry resources. Preparing a workforce to keep the industry vibrant and thriving helps our state, communities, natural resources, and our future workforce.

Becky Haag, SHS instructor, has met and planned with the following partners in preparation for this portion of the grant.

University of Idaho College of Natural Resources

Idaho Forest Group

Idaho Forest Commission

PotlatchDeltic

Idaho Department of Lands

USFS

Forestry program materials/supplies cost itemization

Cost	Description									
\$849.93	<i>144" Sawmill blades (box of 15): \$283.31 x 3 intended use: in conjunction with sawmill</i>									
\$650.76	<i>167" sawmill blades: \$325.38 x 2 intended use: in conjunction with sawmill</i>									
\$280.00	<i>Safety glasses: \$7.00 x 40 = \$280.00 intended use: safety while working with equipment.</i>									
\$599.70	<i>Ear plugs (30): \$19.99 x 30= \$599.70 intended use: safety</i>									
\$79.98	<i>Chainsaw sharpening kit: \$39.99 x 2 intended use: upkeep of chainsaws</i>									
\$1,000.00	<i>Load of logs: \$1000 intended use: milling into dimensional lumber and splitting into firewood to help fund future loads.</i>									
\$1,799.98	<i>MS 362 Stihl Chainsaw 24" bar: \$899.99 x 2 intended use: felling, bucking, de-limbing, thinning</i>									
\$939.98	<i>MS 271 Stihl Farm Boss: \$469.99 x 2 intended use: smaller jobs and bucking up logs</i>									
\$763.92	<i>Standard Peavey (4): \$95.49 each x 4 intended use: turning over heavy logs, dislodging logs from entanglements, moving logs.</i>									
\$271.70	<i>Splitting Mauls (5): \$54.34 x 5= 271.70 intended use: splitting larger pieces of logs into smaller pieces</i>									
\$999.99	<i>13 ton hydraulic gas powered log splitter: \$999.99- intended use: wood splitting</i>									
\$1,799.99	<i>Trailer for log splitter: \$1799.99- intended use: to move/haul log splitter</i>									
\$30,000.00	<i>LT35 Hydraulic Sawmill by Wood Mizer: \$30,000- intended use: mill logs into dimensional lumber</i>									
\$337.98	<i>Two man log carriers (2): \$168.99 each x 2= \$337.98 - intended use: to carry log lengths to mill and splitter</i>									
\$301.65	<i>Two man cross cut saw: \$199.99 or peg and raker version: \$301.65: intended use: to cut logs and trees manually, both functionally and in a historical context. These are also used for competition.</i>									
\$1,319.40	<i>Chain saw chaps (12): \$109.95 x 12 intended use: safety while using logging and forestry equipment.</i>									
\$443.88	<i>Forestry safety helmet (12): \$36.99 x 12 intended use: safety</i>									
\$399.00	<i>Mavic Mini Drone: \$399.00 intended use: allows us to see interior parts of the forest not otherwise visible and gives a panoramic view for silviculture, ground-truthing, and surveys.</i>									
\$42,837.84	Total									

Automotive Technology program Materials/Supplies cost itemization			
Equipment Name	Qty	Cost/per	Total
<i>Cherry Picker</i>	6	\$1,071	\$6,426
<i>Acetylene torch set</i>	4	\$1,296	\$5,186
<i>1,000 lb table lift</i>	5	\$700	\$3,500
<i>Brake Lathe</i>	2	\$11,900	\$23,800
<i>Brake bleeders, DOT 3</i>	1	\$700	\$700
<i>Brake bleeders, DOT 4</i>	1	\$700	\$700
<i>Brake bleeder adapter set</i>	5	\$700	\$3,500
<i>Master cylinder bleeder set</i>	2	\$280	\$560
<i>Braker washer system</i>	1	\$5,600	\$5,600
<i>Pitman arm pullers</i>	5	\$280	\$1,400
<i>Heavy-Duty Drain Caddy</i>	10	\$560	\$5,600
<i>Battery, Starter, Charging System</i>	8	\$1,680	\$13,440
<i>Tender</i>	1	\$1,400	\$1,400
<i>Car Lifts</i>	10	\$9,100	\$91,000
<i>Pressure Washer</i>	1	\$7,000	\$7,000
<i>Trainers</i>	4	\$28,000	\$112,000
<i>AC Unit</i>	1	\$5,600	\$5,600
<i>Engine Stand</i>	1	\$70,000	\$70,000
<i>Scan Tools</i>	4	\$2,100	\$8,400
<i>Electrical Testing</i>	20	\$700	\$14,000
<i>Alignment Rack</i>	1	\$70,000	\$70,000
<i>Tire racks</i>	2	\$28,000	\$56,000
Total Equipment			\$505,812

Total Tools (tab 2)			\$150,000
Total			\$655,812

Automotive Technology program Materials/Supplies cost itemization

Tool Room	Qty		
Drill. 3/8" chuck - corded	2		
Drill. 1/2" chuck - corded	1		
Drill. 3/8" chuck - 18v cordless	1		
Drill. 3/8" chuck - Air drill	1		
Drill. 3/8" chuck - Angle head corded	1		
Impact Wrench	6		
1/2" dr. ft/lb Torque Wrench - Dial	2		
1/2" dr. ft/lb Torque Wrench - Click	2		
1/2" dr. ft/lb Torque Wrench - Digital	2		
3/8" dr. in/lb Torque Wrench - Dial	1		
3/8" dr. in/lb Torque Wrench - Digital	1		
Tap & Die Set - Metric	1		
Tap & Die Set - Metric	1		
Drill bit set - Magnetic	4		
Dial Indicator set - Magnetic	4		
Dial Indicator set - Clamp on w/ flexible arm	2		
Micrometer set 0-4"	6		
Inside Micrometer set	6		
Rollaway tool boxes - fully equipped, stdt use	14		
Rollaway tool boxes - fully equipped, instructor	1		
Pullers/ slide hammers	variety		
Camshaft/gear holding tools	variety		
Valve & seat grinding equip.	2		
Piston ring compressor	2		
Valve spring tension guage	1		
Valve spring compressor	2		
Cylinder head stand set	8		
Oil pressure tester	1		
Cam bearing driver set	1		

Vibration damper pullers	1		
Small hole guage set	4		
Cylinder bore guage	1		
Dial Caliper	1		
Cylinder head straight edge	1		
Ridge reamer	2		
Glaze breaker cylinder hone	1		
Cylinder leakage tester	1		
Vacuum guage	1		
Hand vacuum pump	1		
Cooling system pressure testers	2		
Head bolt angle guage	1		
Dye Lite leak tester	1		
Brake hand tools	variety		
Brake drum micrometer	1		
Caliper overhaul tools	1		
Brake pressure tester	1		
Clutch alignment tools	1		
U Joint/ CV joint tools	1		
Alignment hand tools - various	variety		
Ball joint removal/installer tools	variety		
Hub Tamer wheel bearing remover/installer	1		
Pickle forks	4		
Bushing & seal driver set	1		
Generic scanner IE OTC Genisys	1		
Multimeter kit	14		
Hand held lab scope	1		
Computer w/ All-Data & programs	4		
Full complement nut & bolt bin	variety		
Fluid evacuation kit	1		
Minimum Total	\$150,000		



ARCHITECTS

Architecture - Planning - Interiors
North 8677 Wayne Drive, Suite A
Hayden, Idaho 83835
ph: 208.772.0503
email: info@longwelltrapp.com

project team:

Owner:
Owner Name
Address
Telephone:
Contact:

Architect:
Longwell + Trapp Architects
8382 North Wayne Drive, Suite 204
Hayden, Idaho 83835
Telephone: (208) 772-0503
Contact: Cory Trapp, AIA, CSI

SD

stamp:

project title:

LPOSD CTE BUILDING

revisions:

drawing title:

project no: 2023-045

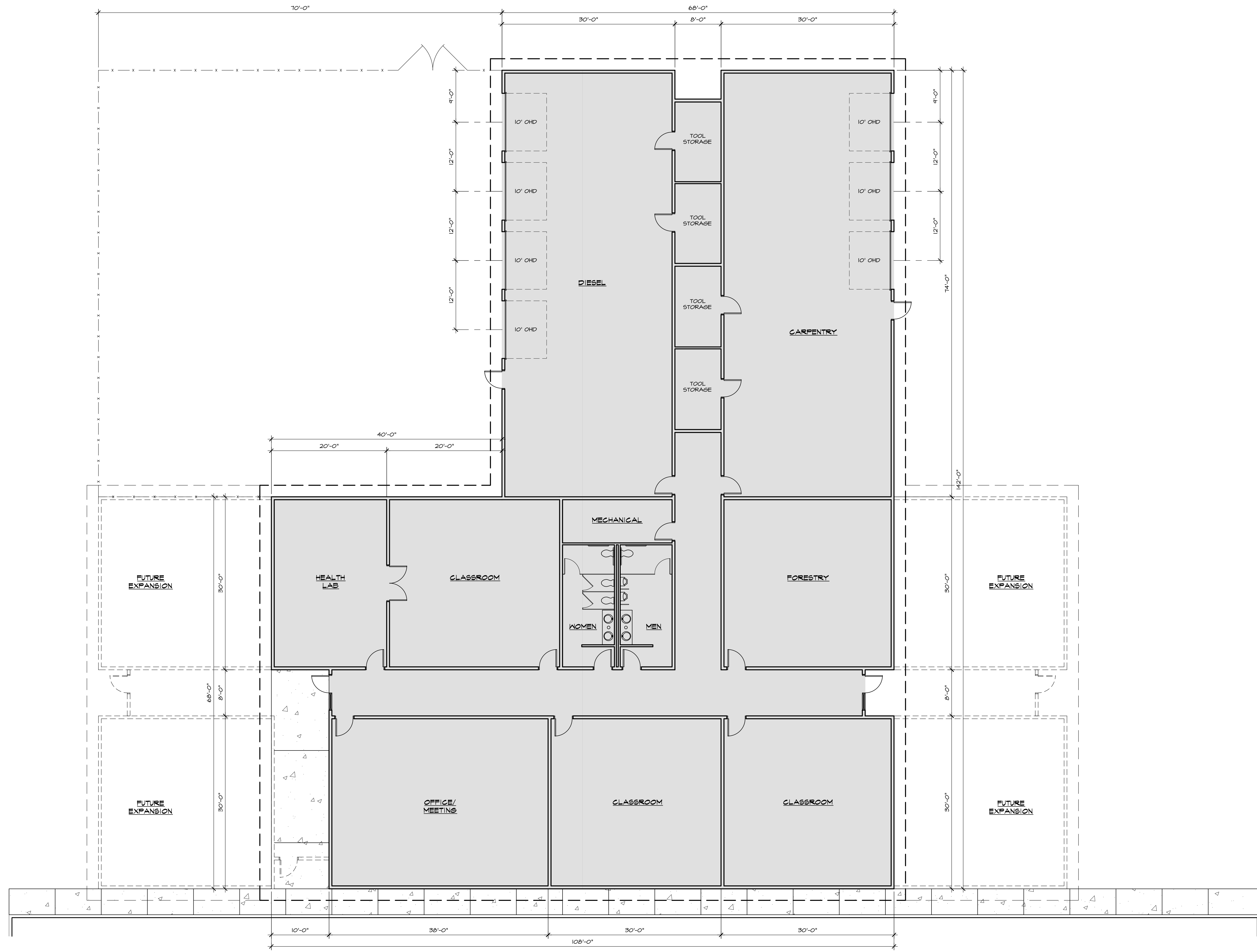
date: 10/03/2023

drawn by: JAC

checked by: CDT

sheet number:

A2.1

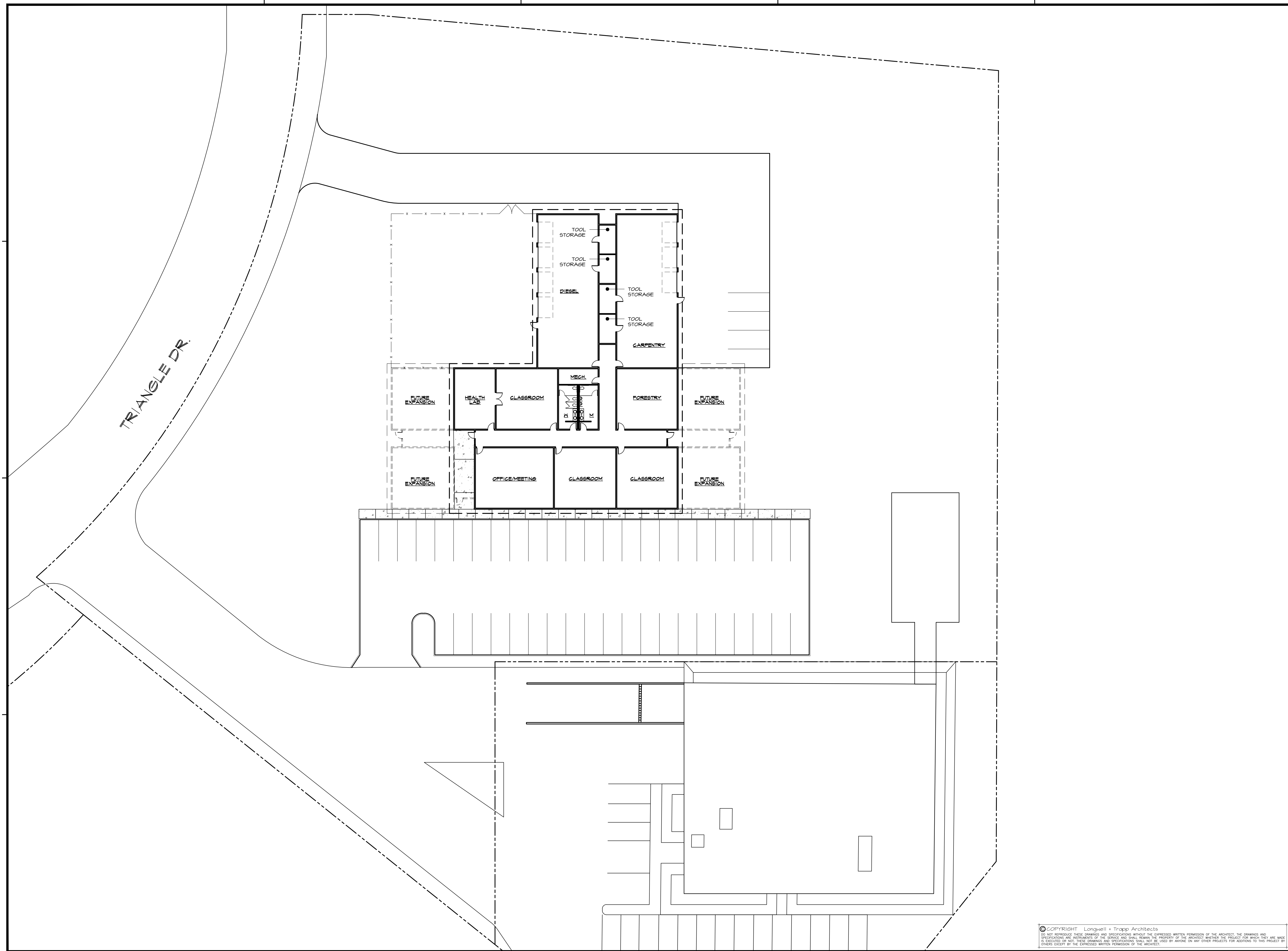


FLOOR PLAN

SCALE: 1/8" = 1'-0"

11,916 SF.

© COPYRIGHT Longwell + Trapp Architects
DO NOT REPRODUCE THESE DRAWINGS AND SPECIFICATIONS WITHOUT THE EXPRESSED WRITTEN PERMISSION OF THE ARCHITECT. THE DRAWINGS AND SPECIFICATIONS ARE INSTRUMENTS OF THE SERVICE AND SHALL REMAIN THE PROPERTY OF THE ARCHITECT, WHETHER THE PROJECT FOR WHICH THEY ARE MADE IS EXECUTED OR NOT. THESE DRAWINGS AND SPECIFICATIONS SHALL NOT BE USED BY ANYONE ON ANY OTHER PROJECTS FOR ADDITIONS TO THIS PROJECT BY OTHERS EXCEPT BY THE EXPRESSED WRITTEN PERMISSION OF THE ARCHITECT.



ARCHITECTS

Architecture · Planning · Interiors
 North 8677 Wayne Drive, Suite A
 Hayden, Idaho 83835
 ph: 208.772.0503
 email: info@longwelltrapp.com

project team:

Owner:
 Owner Name
 Address
 Telephone:
 Contact:

Architect:
 Longwell + Trapp Architects
 8382 North Wayne Drive, Suite 204
 Hayden, Idaho 83835
 Telephone: (208) 772-0503
 Contact: Cory Trapp, AIA, CSI

SD

stamp:

project title:

LPOSD CTE BUILDING

revisions:

drawing title:

project no: 2023-045

date: 10/03/2023

drawn by: JAC

checked by: CDT

sheet number:

A1.1

© COPYRIGHT Longwell + Trapp Architects
 DO NOT REPRODUCE THESE DRAWINGS AND SPECIFICATIONS WITHOUT THE EXPRESSED WRITTEN PERMISSION OF THE ARCHITECT. THE DRAWINGS AND SPECIFICATIONS ARE INSTRUMENTS OF THE SERVICE AND SHALL REMAIN THE PROPERTY OF THE ARCHITECT, WHETHER THE PROJECT FOR WHICH THEY ARE MADE IS EXECUTED OR NOT. THESE DRAWINGS AND SPECIFICATIONS SHALL NOT BE USED BY ANYONE ON ANY OTHER PROJECTS FOR ADDITIONS TO THIS PROJECT BY OTHERS EXCEPT BY THE EXPRESSED WRITTEN PERMISSION OF THE ARCHITECT.