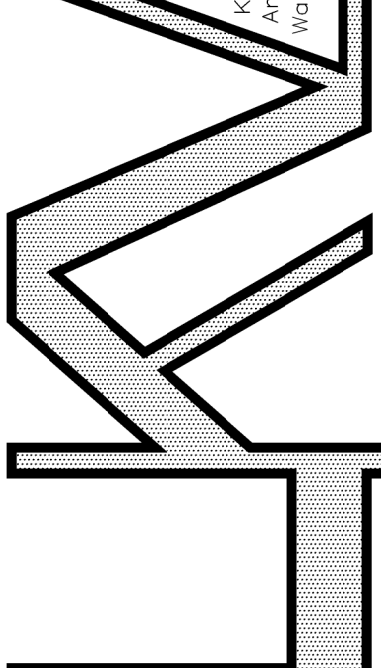


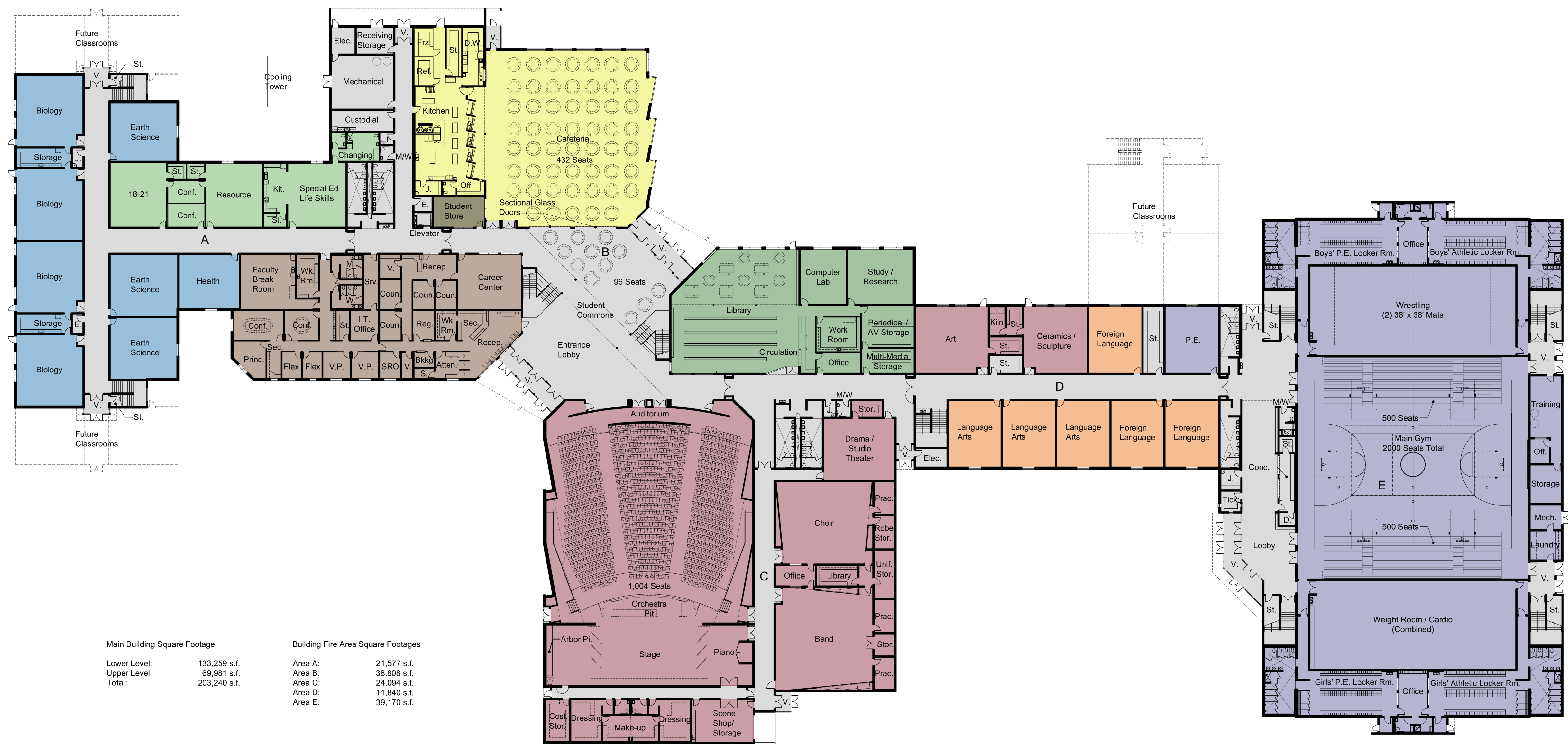
**New Lewiston High School**  
Independent School District No. 1  
Lewiston, Idaho

**LEATHAM - KROHN - VANOCKER ARCHITECTS**  
Kent Krohn, Architect  
2400 E. Riverdale Drive  
Boise, Idaho 83705  
(208) 336-3443  
www.lkva.com



DATE: 12 December 2016  
REVISIONS:  
JOB NO.:  
DRAWN BY: M.S.  
CHECKED BY: W.T.

- Administration / Counseling
- Library / Computer Labs / General Ed
- Business Education (Separate Building)
- Performing and Visual Arts
- Family and Consumer Science (Separate Building)
- Physical Education and Athletics
- Food Service / Cafeteria
- Professional and Technical Education (Separate Building)
- Language Arts / Foreign Language
- Social Studies and History
- Math / Science / Health
- Special Education



Main Building Square Footage		Building Fire Area Square Footages	
Lower Level:	133,259 s.f.	Area A:	21,577 s.f.
Upper Level:	69,981 s.f.	Area B:	38,808 s.f.
Total:	203,240 s.f.	Area C:	24,094 s.f.
		Area D:	11,840 s.f.
		Area E:	39,170 s.f.

**Lower Level Floor Plan**  
Scale: 1" = 30'-0"