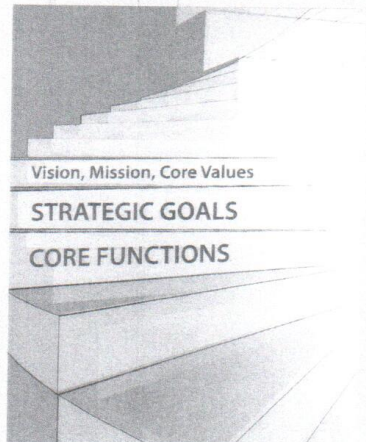


GREAT PUBLIC SCHOOLS FOR EVERY STUDENT

SECRETARY-TREASURER | INDEPENDENT AUDITORS
FINANCIAL REPORTS

PRESENTED TO THE REPRESENTATIVE ASSEMBLY
JULY 2013



*Great Public Schools
for Every Student*

**MEMBERSHIP COMPARISON
BY STATE**

STATE	ACTIVE			Other Memberships*			Total Memberships		
	Professional, ESP and Life								
	2011-2012	2010-2011	Increase (Decrease)	2011-2012	2010-2011	Increase (Decrease)	2011-2012	2010-2011	Increase (Decrease)
ALABAMA	69,246	73,864	(4,618)	27,005	26,660	345	96,251	100,524	(4,273)
ALASKA	11,441	11,541	(100)	1,563	1,547	16	13,004	13,088	(84)
ARIZONA	17,774	26,607	(8,833)	2,457	2,448	9	20,231	29,055	(8,824)
ARKANSAS	11,707	12,198	(491)	2,665	2,677	(12)	14,372	14,875	(503)
CALIFORNIA	296,599	299,151	(2,552)	16,463	16,786	(323)	313,062	315,937	(2,875)
COLORADO	33,997	35,479	(1,482)	4,082	4,096	(14)	38,079	39,575	(1,496)
CONNECTICUT	37,358	37,353	5	5,629	5,501	128	42,987	42,854	133
DELAWARE	11,477	11,233	244	1,165	1,109	56	12,642	12,342	300
DISTRICT OF COLUMBIA	334	337	(3)	3,093	2,863	230	3,427	3,200	227
FEDERAL	5,982	5,963	19	462	440	22	6,444	6,403	41
FLORIDA	127,367	136,656	(9,289)	4,731	10,842	(6,111)	132,098	147,498	(15,400)
GEORGIA	29,168	30,836	(1,668)	8,053	10,260	(2,207)	37,221	41,096	(3,875)
HAWAII	12,316	12,444	(128)	5,739	5,556	183	18,055	18,000	55
HAWAII-UHPA	3,027	3,024	3	129	129	-	3,156	3,153	3
IDAHO	9,577	11,177	(1,600)	1,709	1,698	11	11,286	12,875	(1,589)
ILLINOIS	128,067	127,995	72	10,634	10,215	419	138,701	138,210	491
INDIANA	41,386	43,963	(2,577)	5,482	5,866	(384)	46,868	49,829	(2,961)
IOWA	34,636	35,069	(433)	2,188	2,179	9	36,824	37,248	(424)
KANSAS	23,595	24,455	(860)	3,416	3,707	(291)	27,011	28,162	(1,151)
KENTUCKY	30,451	31,512	(1,061)	11,161	10,374	787	41,612	41,886	(274)
LOUISIANA	12,697	14,042	(1,345)	1,055	1,015	40	13,752	15,057	(1,305)
MAINE	19,175	20,118	(943)	5,241	5,100	141	24,416	25,218	(802)
MARYLAND	64,881	66,433	(1,552)	3,325	3,217	108	68,206	69,650	(1,444)
MASSACHUSETTS	99,356	98,449	907	11,229	11,216	13	110,585	109,665	920
MICHIGAN	115,389	117,122	(1,733)	34,310	32,987	1,323	149,699	150,109	(410)
MINNESOTA	73,809	73,983	(174)	14,003	14,131	(128)	87,812	88,114	(302)
MISSISSIPPI	4,934	5,108	(174)	2,314	2,268	46	7,248	7,376	(128)
MISSOURI	27,808	28,813	(1,005)	6,336	6,175	161	34,144	34,988	(844)
MONTANA	16,157	16,575	(418)	1,743	1,747	(4)	17,900	18,322	(422)
NEBRASKA	21,402	21,803	(401)	6,532	6,183	349	27,934	27,986	(52)

STATE	ACTIVE			Other Memberships*			Total Memberships		
	Professional, ESP and Life								
	2011-2012	2010-2011	Increase (Decrease)	2011-2012	2010-2011	Increase (Decrease)	2011-2012	2010-2011	Increase (Decrease)
NEVADA	23,959	24,848	(889)	1,363	1,367	(4)	25,322	26,215	(893)
NEW HAMPSHIRE	15,261	15,860	(599)	1,640	1,658	(18)	16,901	17,518	(617)
NEW JERSEY	169,376	169,292	84	25,582	26,073	(491)	194,958	195,365	(407)
NEW MEXICO	7,811	7,996	(185)	1,223	1,174	49	9,034	9,170	(136)
NEW YORK	382,136	389,707	(7,571)	7,211	6,922	289	389,347	396,629	(7,282)
NORTH CAROLINA	35,784	41,544	(5,760)	13,358	13,519	(161)	49,142	55,063	(5,921)
NORTH DAKOTA	7,228	7,376	(148)	1,640	1,570	70	8,868	8,946	(78)
OHIO	112,310	117,040	(4,730)	8,667	8,709	(42)	120,977	125,749	(4,772)
OKLAHOMA	20,508	21,774	(1,266)	2,724	2,842	(118)	23,232	24,616	(1,384)
OREGON	38,623	40,853	(2,230)	2,782	2,757	25	41,405	43,610	(2,205)
PENNSYLVANIA	150,532	157,768	(7,236)	35,064	33,438	1,626	185,596	191,206	(5,610)
RHODE ISLAND	8,838	8,945	(107)	1,954	1,762	192	10,792	10,707	85
SOUTH CAROLINA	6,748	7,111	(363)	2,645	2,620	25	9,393	9,731	(338)
SOUTH DAKOTA	5,113	5,679	(566)	1,360	1,377	(17)	6,473	7,056	(583)
TENNESSEE	40,459	45,938	(5,479)	13,005	12,958	47	53,464	58,896	(5,432)
TEXAS	45,292	46,666	(1,374)	2,757	2,696	61	48,049	49,362	(1,313)
UTAH	16,968	17,388	(420)	1,688	1,618	70	18,656	19,006	(350)
UTAH-USEA	5,054	5,264	(210)	32	25	7	5,086	5,289	(203)
VERMONT	10,622	10,649	(27)	1,324	1,286	38	11,946	11,935	11
VIRGINIA	49,781	51,390	(1,609)	5,399	5,394	5	55,180	56,784	(1,604)
WASHINGTON	78,166	79,302	(1,136)	5,827	5,683	144	83,993	84,985	(992)
WEST VIRGINIA	9,987	10,538	(551)	1,560	1,480	80	11,547	12,018	(471)
WISCONSIN	69,224	85,437	(16,213)	12,603	12,473	130	81,827	97,910	(16,083)
WYOMING	5,337	5,543	(206)	1,070	963	107	6,407	6,506	(99)
DIRECT **	120	121	(1)	68	73	(5)	188	194	(6)
TOTALS	2,706,350	2,807,332	(100,982)	356,460	359,429	(2,969)	3,062,810	3,166,761	(103,951)

* Includes Substitute, Staff, Reserve, Student and Retired Memberships (Pre-Retired excluded)

** In general, this category refers to those members ineligible for state membership such as administrators, private school, etc., who join NEA directly, not through a local affiliate.